

Anti cavitation valve



Anti cavitation valve for Sunfab hydraulic motor SCM

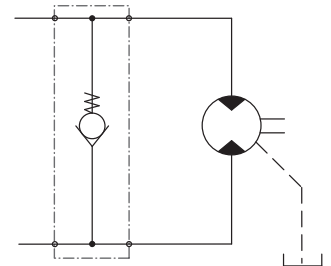
Sunfab's anti cavitation valve

is used to minimise the risk of cavitation damage in connection with insufficient inlet pressure. This can occur, among others, in applications with a relatively large rotating mass with a long run down time (e.g. fan operations). The hydraulic motor must have a defined direction of rotation when using Sunfab's anti cavitation valve. The valve can be

adapted to both left and right rotation.

Function:

A check valve between the pressure and return ports opens to ensure a flow of oil to the motor if the inlet pressure to the motor becomes too low. It is therefore important to have a specific back pressure on the return line, which if necessary can be created by means of a back-pressure valve.



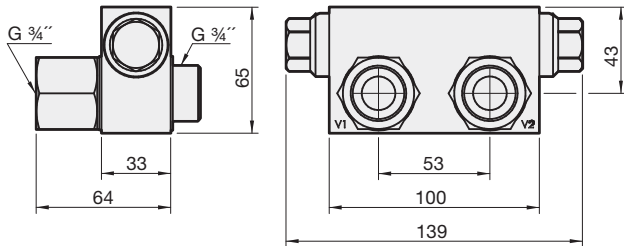
For motor SCM

| | | 012-034 | 040-064 | 084-130 |
|----------------------------|-----|---------|---------|---------|
| Max. continuous pressure | MPa | 35 | 35 | 35 |
| Max. intermittent pressure | MPa | 40 | 40 | 40 |
| Weight | kg | 1.7 | 3.9 | 3.4 |

Subject to design alteration

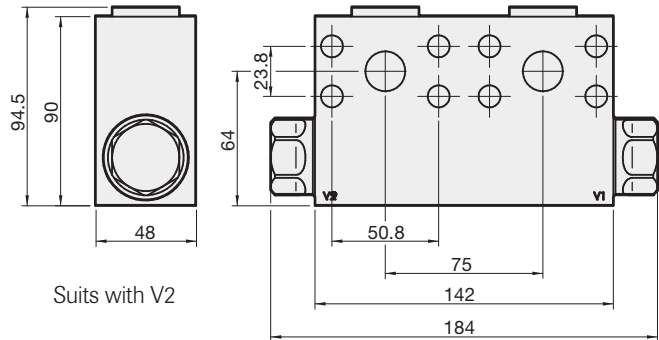
Dimensions anti cavitation valve

Valve for SCM 012-034
Part No. 91024



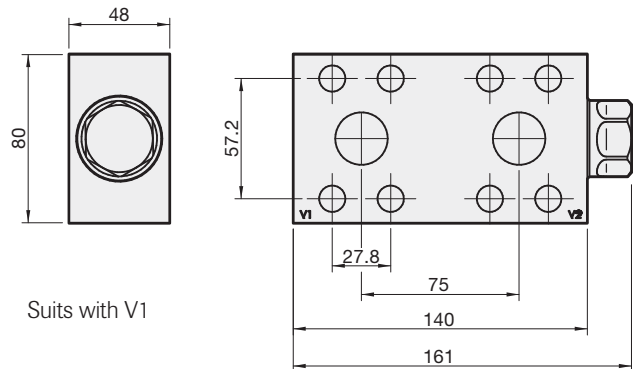
Suits with K3

Valve for SCM 040-064
Part No. 91025



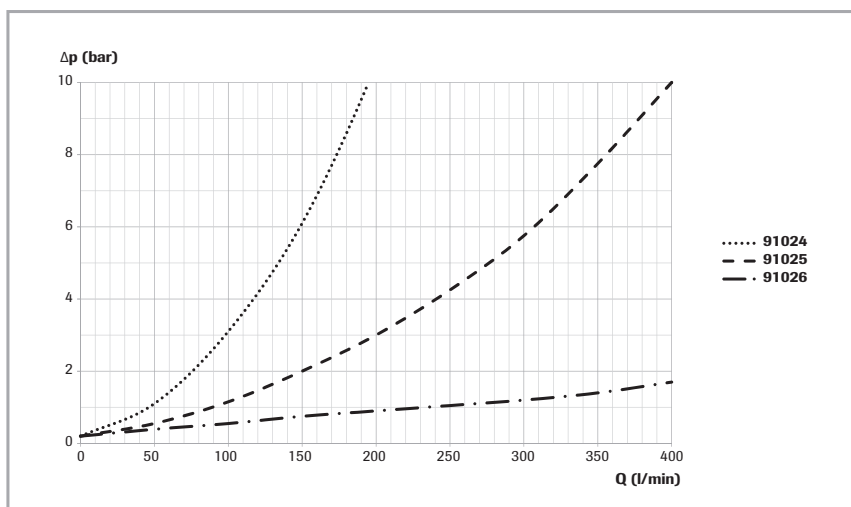
Suits with V2

Valve for SCM 084-130
Part No. 91026



Suits with V1

| Type SCM | 012-034 | 040-064 | 084-130 |
|----------------------------|---------|---------|---------|
| Valve part. no. | 91024 | 91025 | 91026 |
| Bolt kit part. no. | - | 50854 | 50855 |
| Min-max flange height [mm] | - | 16-21 | 21-25 |
| Flange kit part. no. | - | 50857 | 50858 |
| Flange thread dim. | - | G 3/4" | G 1" |



Valve opening pressure 0,3 bar.