

**SLPD 40/20-64/32 SAE is a series of in-line double pumps with extremely low noise levels for demanding mobile hydraulics.**

SLPD 40/20-64/32 SAE pumps are equipped with shafts and flanges according to the SAE-C standard. They are available in five different sizes. It's slim pump housing enables direct installation on the power take-off in very confined spaces. SLPD is also easy to install with frame mountings via an intermediate shaft. The high level of reliability is based on the choice of materials, hardening methods, surface structures and the quality assured manufacturing process.

**Other advantages:**

- Independent direction of rotation
- A cost effective total solution in relation to a conventional installation using two pumps with a splitter gear box
- Smooth operation over the entire speed range
- Long life due to high demands on material selection, such as bearings, seals, etc.
- O-rings on all contact surfaces as well as double shaft seals eliminate oil leakage from the pump and power take-off
- Extremely low noise emission over entire speed and pressure ranges

Versions, main data

Example

SL	PD	-	46/46	W	-	N	-	SC4	-	C14	-	S4	S	-	0
Line	1		2	3		4		5		6		7	8		9

Line	
SL	Sunfab In-Line

1. Type	
PD	Dual flow pump

2. Displacement					
40/20	35/35	56/28	46/46	53/53	64/32

3. Direction of rotation	
W	Independent

4. Sealing	
N	Nitrile

5. Mounting flange	
SC4	SAE C4

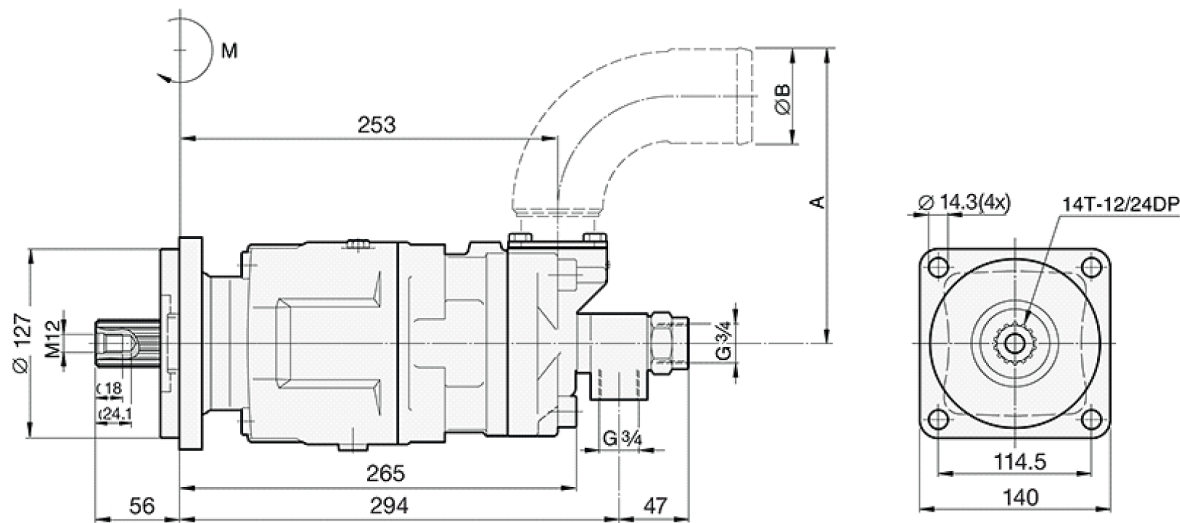
6. Shaft	
C14	SAE C 14t-12/24DP

7. Connection cover	
S4	Sunfab standard SLPD

8. Connections	
S	Sunfab standard

9. Additional Connections	
0	-

Pump SLPD 40/20-64/32 SAE			40/20	35/35	56/28	46/46	53/53	64/32
Theoretical oil flow at pump speed	rpm	500	20.3 + 10.1	16.9 + 16.9	27.4 + 13.7	22.9 + 22.9	26.2 + 26.2	31.5 + 15.7
		1000	40.7 + 20.3	33.9 + 33.9	54.9 + 27.5	45.8 + 45.8	52.5 + 52.5	63.0 + 31.5
		1500	61.0 + 30.4	50.8 + 50.8	82.3 + 41.2	68.7 + 68.7	78.7 + 78.7	94.5 + 47.2
Displacement	cm <sup>3</sup> /rev		40.7 + 20.3	33.9 + 33.9	54.9 + 27.5	45.8 + 45.8	52.5 + 52.5	63.0 + 31.5
Max pump speed	rpm		2200	2200	1800	1800	1600	1600
Max working pressure	bar		350	330	350	330	330	350
Weight	kg		22	22	22	22	22	22
Dimensions	mm	A	133	133	166	166	166	166
Min. dimensions		B	50	50	64	64	64	64
Tare-weight torque (M)	Nm		26.5	26.5	26.5	26.5	26.5	26.5
Direction of rotation	Independent							





## WARNING

When the pump is running:

1. Do not touch the pressure hose
2. Watch out for rotating parts
3. The pump and hoses may be hot

*Sunfab reserves the right to make changes in design and dimensions without notice. Printing and typesetting errors reserved.  
© Copyright 2015 Sunfab Hydraulics AB. All Rights Reserved.*