



1993
25 JAAR
2018 **R&S** HYDRAULIEK

Watchlog Bluetooth Pressure Sensor HT-WLBP

- Powered by 2x AA batteries up to 5 years battery life
- Transmit pressure readings via bluetooth to iOS and Android apps and Windows software
- Connect up to 8 sensors on one device
- Direct or remote transmitter mounting options



Plant Engineering
Industrial machinery
Agricultural machinery
Hydraulics
Automotive

The HT-WLBP range of wireless bluetooth pressure sensors allows pressure readings to be transmitted wirelessly up to 90m with no need for external power.

Discover more at www.hydrotechnik.co.uk

HT-WLBP Watchlog Bluetooth Pressure Sensor

The HT-WLBP wireless pressure sensors are designed for use in applications where external power is not available or where cabled sensors are not suitable such as in rotating or moving machinery.

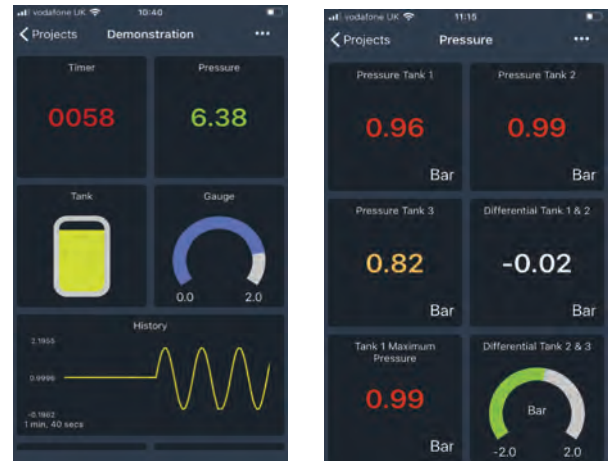
The high-accuracy, low-noise measurement electronics deliver high-resolution, low-drift results. The readings can be transmitted at rates from 10 times per second up to once per minute.

The Bluetooth sensor transmitter module provides exceptional performance in the field with a potential battery life of up to 5 years

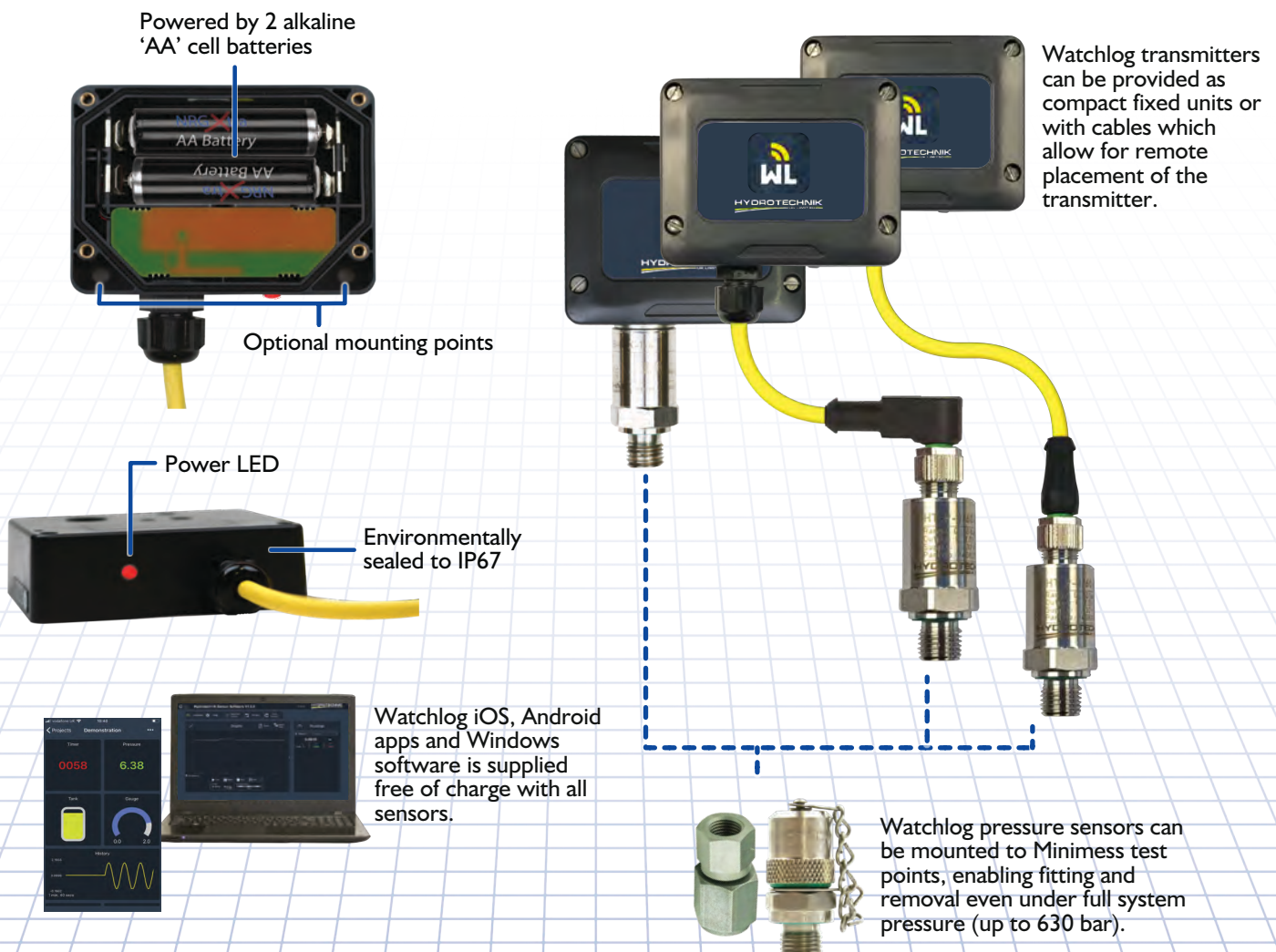
The sensor data is captured on the free downloadable Watchlog sensor apps, available on iOS and Android platforms.

Data can be viewed in real time in numerical or graphical formats with recording features included.

Windows PC software is available soon for more advanced viewing, logging, annotation and reporting features

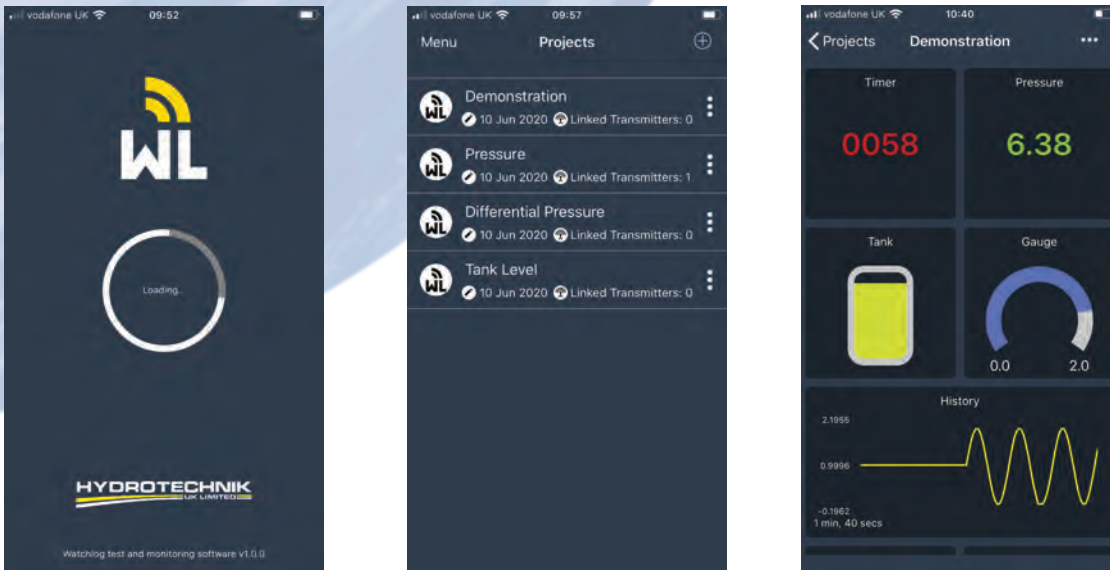


HT-WLBP Assembly Overview



Free Watchlog Bluetooth Apps and software

iOS & Android apps download direct from Apple App Store or Google Play.



The iOS and Android Apps give full control of monitoring projects with simple set up and visual control of each sensors data. Connect up to 8 transmitters to 1 smart tablet or phone to read all connected sensors simultaneously up to a maximum speed of 10ms. Data logging and data export is also catered for at a maximum rate of 0.5 seconds per reading. For faster recording rates, refer to optional Windows PC Watchlog software. Capture min/max peak values, select various display tile options, colours and set visual alarm levels.

Windows PC software



Our free to use PC software gives faster data logging capabilities and more export report / functionality to our bluetooth devices. Connect up to 8 sensors at once.

- Peak pressure capture
- Graph or numeric display
- Add notes to results
- Zoom/export of data for accurate event capture

HT-WLBP Watchlog Wireless Pressure Sensor

Technical Specifications

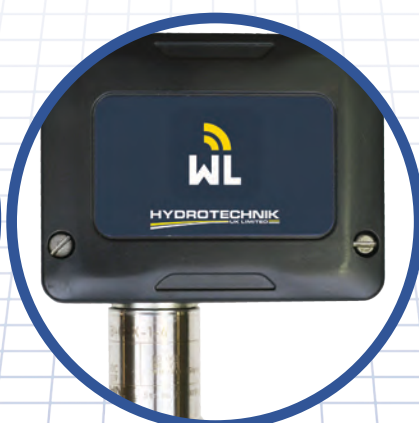
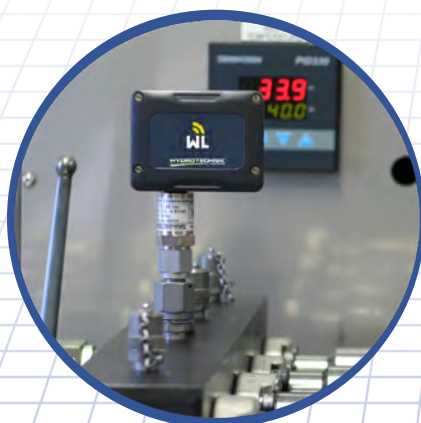
Watchlog Transmitter

Specification	Detail
Wireless range - depending on mobile device	up to 90 meters
Transmission rate	100ms...60s
Power supply	3 Vdc (2xAA batteries)
Wireless transmitter enclosure operating temperature	-20...55°C
Battery life	up to 5 years
Pressure sensor media temperature	-40...125°C
Pressure sensor ambient temperature	-40...105°C
Pressure sensor accuracy (at RT)	0.5% FS
Pressure sensor wetted parts	SS316L
IP rating	IP67

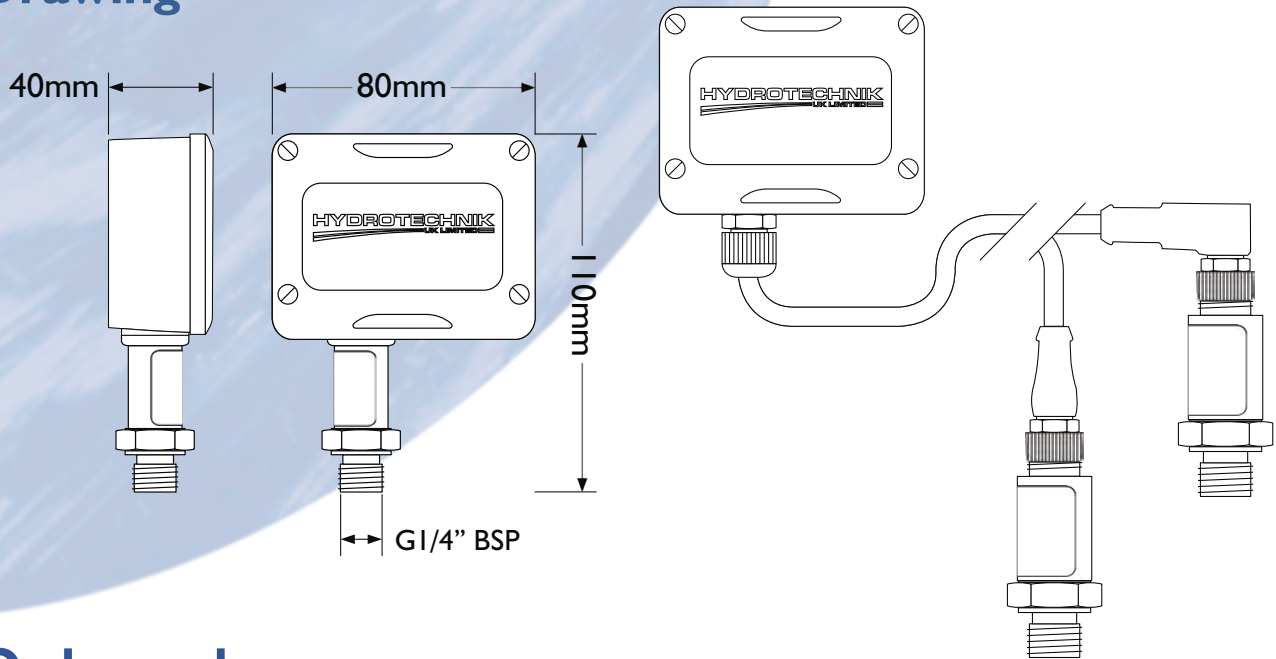
Pressure sensor

Pressure range	Over pressure (max)	Burst pressure (min)
0...25 bar	50 bar	75 bar
0...160 bar	320 bar	480 bar
0...400 bar	800 bar	1200 bar
0...700 bar	1200 bar	1800 bar

Other pressure ranges available on request



Drawing



Order codes

HT-WLBP-XXXX-Y Z.Z

Replace **XXXX** with below code for the required pressure range

0025 = 0...25 bar
0160 = 0...160 bar
0400 = 0...400 bar
0700 = 0...700 bar

Other pressure ranges available on request

Replace **Y** with below code for the required sensor connector type

A = 90° angled
S = Straight

Leave blank if no cable required

Replace **Z.Z** with below code for cable length

1.5 = 1.5 meters
3.0 = 3.0 meters
5.0 = 5.0 meters
10.0 = 10.0 meters

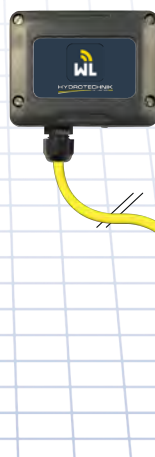
Other lengths available on request

Ordering examples



HT-WLBP-400

0...400 bar pressure sensor directly mounted to Watchlog transmitter.



HT-WLBP-0160-S3.0

0...160 bar pressure sensor cable mounted to Watchlog transmitter using a 3.0m cable with straight sensor connector.

Bluetooth Configuration options

One-to-One



One-to-Many



Many-to-One



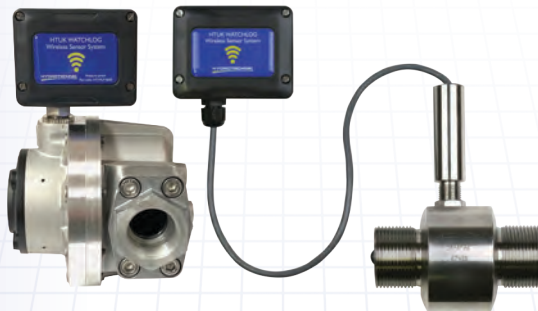
Many-to-Many



Other Watchlog products available



HT-WLT wireless pressure & temperature sensors



HT-WLF wireless flow meters



HT-AR signal repeaters
HT-PPISPI solar power panel and battery pack.



HT-BSx series USB wireless signal receiving base stations.



Watchlog wireless display and data logging software